

ENVIRONMENTAL Fact Sheet



29 Hazen Drive, Concord, New Hampshire 03301 • [603] 271-3503 • www.des.nh.gov

ARD-22

2018

Take Steps to Limit Air Emissions: Use Electric Lawn & Garden Equipment

Did you know that every time you mow your lawn, you are contributing to air pollution? One hour of use of a gasoline lawn mower is equal to driving 300 miles. Gasoline-powered lawn and garden equipment emit air pollutants such as carbon dioxide, carbon monoxide, hydrocarbons, volatile organic compounds, nitrogen oxides and particulate matter.

These air pollutants contribute to the formation of ground-level ozone and haze.

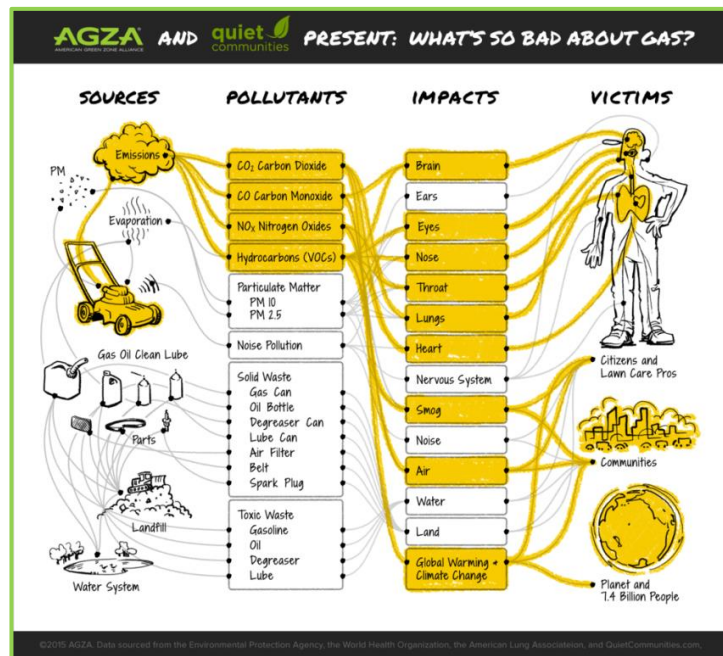
While ozone occurs naturally in the upper atmosphere and shields the earth from harmful radiation, ozone at ground level is a harmful pollutant.

Ground level ozone affects your health, your neighbor's health, and the environment.

Exhaust emissions from gasoline-powered engines can lead to health problems such as respiratory disease, cancer, cardiovascular disease, neurological conditions and premature death.

Every time you fill your gas can and mower, you are emitting volatile organic compounds into the air.

EPA estimates that over 17 million gallons of gas is spilled as the equipment is refueled each year, polluting our drinking water, too.



Infographic ©2018 American Green Zone Alliance, AGZA.net

Tips for Reducing Emissions from Lawn and Garden Equipment

Switch to Electric Operated Equipment.

Electric corded or battery -powered lawn and garden equipment produce no emissions and require no gas or oil to operate, hence no annual maintenance.

Maintain your equipment.

Like cars, properly maintained lawn and garden equipment are less likely to pollute and will perform better and last longer. Perform maintenance as recommended in your user's manual.

Avoid spilling gasoline or allowing it to evaporate.

Because even small gasoline spills evaporate and pollute the air and water, preventing spills and over-fills is an easy and effective way for power equipment owners to prevent pollution. Use a spill-proof gasoline container in a size you can handle easily and hold securely.



For more information on lawn and garden equipment, contact the NHDES Air Resources Division at (603) 271-1370 or visit <https://www.des.nh.gov/organization/divisions/air/index.htm>